



# West Harris County Branch

AMERICAN ASSOCIATION OF UNIVERSITY WOMEN

Volume XXXXVII

October 2022 Newsletter

Issue 2

**President**

Anne Amador  
713-240-8095  
Amador.aauw@earthlink.net

**President Elect**

Poupette Farnell

**Program Vice President**

Lilian Care

**Membership Vice President**

Carolyn Stoffel

**AAUW Funds Vice-Presidents**

Debbie Campbell  
Diane Statham

**Recording Secretary**

Sheila Jaynes

**Finance Officer**

Diana Tiberia

**Corresponding Secretary**

Becky French

**Newsletter Editor**

Kris Bybee-Finley  
aauwhcnews@gmail.com

**November Deadline:**

October 15, 2022

**Stay informed**

Branch website: [aauw-whc.org](http://aauw-whc.org)

National website: [aauw.org](http://aauw.org)



**AAUW West Harris County Branch – October Meeting**

**Saturday, October 15 AT 9:30 a.m.**

**Tracy Gee Community Center**

In August 2022, we marked the fifth anniversary of Hurricane Harvey which inundated our city with record rainfall. Many of us were forced to evacuate our homes, some of us had to walk through chest-high water to safety.

Why was our city so impacted by this rainfall? What caused the bayous and creeks to overflow their banks and our neighborhood streets to become rivers in themselves? Did you know we in Harris County live in a watershed?

Here to educate us about our own backyard is Ayanna Mccloud, Director of Bayou City Waterkeeper, a local non-profit. Bayou City Waterkeeper works with communities affected by flooding and pollution in order to restore our natural systems, achieve equitable policy solutions and advance systematic change to benefit all who live within the Lower Galveston Bay watershed.

We will learn about our five most critical wetland areas along with a wetland mapping app which aims to create a sense of urgency and hope. We must be urgent in redefining our approach to flood protection and protect what we have left.

The Lower Galveston Bay Watershed is home to some of the most unique and diverse wetlands in the world. Our wetlands are not only home to millions of migratory birds that benefit from the rich coastal habitat, but they also maintain water quality, protect against erosion, and – especially important for our region – serve as nature’s best defense against flooding. To increase awareness and strengthen advocacy on the importance of protecting wetlands, Bayou City Waterkeeper works with community members who become our partners on the ground. Our community members are the experts who continue to protect our watershed, their surrounding wetlands and their community from future extreme weather-related flood events and rising climate risk.

*Continued*

**\*\* Save the date! \*\***  
**AAUW Holiday Party**  
**Sunday, December 4<sup>th</sup>**  
**4:00-6:00 p.m.**

## Our Guest Speaker



Ayanna Jolivet Mccloud, Executive Director of Bayou City Waterkeeper, will be our speaker in October. Ayanna supports community efforts in wetland protection, water quality, and watershed resiliency which center on equity and nature-based solutions. Prior to this, Ayanna was Director of Education and Public Programs at Houston Botanic Garden, launching the organization's first-ever education offerings, framing biodiversity and ethnobotany. She has worked at environmental and cultural institutions for over twenty years. A native Houstonian and fourth-generation artist, she develops frameworks for new ways of imagining and advocating for water, ecology, justice, and people in greater Houston.

*Lillian Care, Program Director*

## Dear West Harris County Members,



I hope you enjoyed our Membership Coffee as much as I did; many thanks to Carolyn Stoffel for organizing it, and to the trusty members who helped her. The next events I'm eagerly anticipating are our monthly Branch Meetings and their fascinating speakers procured by Lillian Care.

If you haven't already done so, check out the wonderful new video posted on our WHC website! [AAUW West Harris County \(TX\) Branch](#). It's full of information about AAUW and our branch, with lots of fun photos of our members mixed in. Extra kudos to our Web Mistress, Susan Boone, for producing and posting this!

Remember to "RSVP" to your invitation to our upcoming Home Alone Fall Ball as you're able, with a donation to National AAUW funds, our own Thomsen-Baker-Telfer Scholarship Fund, or both. This imaginary event brings in real funding to worthwhile causes; look for more information in this newsletter.

Hope to see you at the next Branch Meeting!

*Anne Amador, President*



### Important Election Dates

- October 11 - Last day to register to vote or change your address
- October 24 - First day to vote early in person
- October 28 - Last day to request a Vote-by-Mail ballot
- November 4 - Last day to vote early in person
- November 8 - Election Day and Vote-by-Mail Ballot receipt deadline



## Sources of Election Information

[What's my district?](https://apps.texastribune.org/features/2022/texas-ballot-2022-midterm-election-nov-8/) <https://apps.texastribune.org/features/2022/texas-ballot-2022-midterm-election-nov-8/>

Insert your address. Provides some basic info about make-up of each district and shows shape of district (gerrymandering) as well as names of candidates.

Vote411 [www.vote411.org](http://www.vote411.org)

Nonpartisan source of where candidates stand on the issues. Available mid-October close to start of early voting. Requires your address.

## Thomsen-Baker-Telfer Scholarship

At the April 11, 2022 AAUW-WHC Board Meeting, the Baker-Telfer Scholarship was renamed the Thomsen-Baker-Telfer Scholarship to recognize the generosity of Pat and Leon Thomsen. It also honors the sons of Arlene Baker and Carol Telfer. By the time the New Member Coffee was held on August 27<sup>th</sup>, we received documentation from the Texas Secretary of State that the name change was official. What a perfect venue for this announcement to be made!

The Thomsen-Baker-Telfer Scholarship Committee met on 9/12/22. We extended an enthusiastic welcome to our newest member, Pamela Ossario. Pamela will be shadowing Shari Mauthner in her role as the Momentum (formerly Survey Monkey) administrator and technology specialist of the committee.



Our headline news is that our committee unanimously voted to raise the scholarship given to three fortunate high school senior women who plan to pursue a STEM career at their chosen university. We are grateful to the generous donors to our fund which has made this increase possible. Our 2022 graduates were given \$2000 per student. Our 2023 graduates from Alief ISD, Houston ISD, and Spring Branch ISD will receive \$3000 each!

Stay tuned for plans which are in the works for a special Donor Luncheon to honor those who contribute to the Thomsen-Baker-Telfer Scholarship Fund and those who donate to the national AAUW organization.

For those who wish to donate by check, write your check to Thomsen-Baker-Telfer Scholarship Fund and mail it to Carolyn Morris, 11159 Riverview Way, Houston, Texas 77042. If you prefer to give electronically, we accept Zelle. Zelle is available through most major bank apps under transfers and incurs no additional fees to either the donor or to our fund. To use Zelle, enter the email address [thomsenbakertelferscholarship@gmail.com](mailto:thomsenbakertelferscholarship@gmail.com).

*Janice Kerekgyarto*

## Funds

### National Funds & Local Thomsen-Baker-Telfer Scholarship Fund Kick Off Fall Ball

Jan Kerekgyarto, Diane Statham, Debbie Campbell, and Carolyn Morris invite you to *not* attend our 2022 Home Alone Fall Ball.

Now it's even easier to support women and girls both locally and nationally. In keeping with our *\$6 million reasons* mentioned in the September issue, our branch website now has [step-by-step instructions](#) for tagging WHC when you donate to a national fund.

Even more exciting, our local Thomsen-Baker-Telfer Scholarship Fund now accepts donations through Zelle. See the Fall Ball invitation on the next page for details!

*Debbie Campbell*  
*AAUW Funds Vice-Presidents*





West Harris County Branch AAUW cordially invites you to *NOT* attend

## Home Alone Fall Ball

October through December 2022

Don't worry about a costume. Don't contend with Houston's anxiety-producing traffic. Sit back, relax, and munch on an apple in front of the TV as you watch a scary movie. No bobbing for that apple. And leave the makeup and outfit to suit the imagination to the professionals. No need to travel. No-cost entertainment.

Now use those savings to support AAUW's mission to make life more livable for women and girls.

**Supporting Our National Mission** by credit card (preferred) remains fast, convenient, and safe. To help WHC stay on state leaderboards while supporting our national mission, simply **follow the steps at [westharriscounty-tx.aauw.net/funds/](https://westharriscounty-tx.aauw.net/funds/):**



**TL;DR** ① go to [aauw.org](https://aauw.org) and log in, ② in the left menu click on **My Affiliations**, confirm that **West Harris County** is your **Primary Branch**, ③ click the big red **DONATE** button, and ④ continue with your donation.

⑤ **Important** Next to **Additional Emails**, please enter **aauw.whc.funds@gmail.com**. This copies WHC board members Debbie Campbell and Diane Statham on your receipt email (but does not share your credit card info).

**Click for Step-by-Step Instructions**

For help with the instructions on the [WHC website](https://www.aauw.org/whc) linked above, or to donate to AAUW National Funds by check, contact Debbie or Diane.

**Supporting Local Scholarships** for Houston area high school senior girls pursuing college studies in a STEM field is also easy. Just make your check payable to **Thomsen-Baker-Telfer Scholarship Fund** and mail to WHC board member **Carolyn Morris** at 11159 Riverview Way Houston TX 77042-7309.

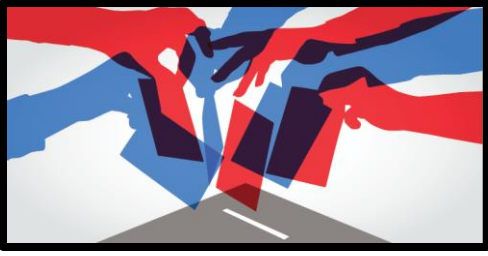
Or, save time and effort by donating immediately through **Zelle** to [thomsenbakertelferscholarship@gmail.com](mailto:thomsenbakertelferscholarship@gmail.com).

To read more about our local STEM scholarships, visit the Thomsen-Baker-Telfer page on the WHC website at [westharriscounty-tx.aauw.net/about/scholarships/](https://westharriscounty-tx.aauw.net/about/scholarships/).

*Donations are tax deductible*, but please note that donations to National (managed by AAUW in Washington, D.C., and facilitated locally) are completely separate from donations to our Thomsen-Baker-Telfer scholarship Fund (managed locally).



### Voter Engagement



September 20 was National Voter Registration Day. In fact, it was the tenth anniversary of this special nonpartisan national holiday. Thousands of organizations and volunteers organize to ensure that everyone in our community has the opportunity to have their voice heard by voting. To vote you must be registered.

West Harris County Branch members helped out in this effort. First, a number of our members became voter registrars. Second, we partnered with local groups promoting voter registration including Harris County Elections Community Outreach and the League of Women Voters. They, in turn, had contacted public high schools, Houston community colleges, post offices, libraries, community centers, and nonprofit community organizations to offer voter registration or, at a minimum, mail-in voter registration cards and information on how to vote. To ensure that cards and information were available, we were asked to adopt a post office and a public library. In years past, many post offices did not want to provide the cards but this year they welcomed the help because customers had been requesting the cards. Houston Public Libraries are required to ask those requesting a library card if they would also like to register to vote. Even so, many of librarians asked for a voter registrar to assist on National Voter Registration Day. Nonprofits welcomed the opportunity for their clients to become registered voters.

Why is voter engagement at all these locations so important?

- Studies have found that people who fill out paper registration forms learn more about when to vote and what forms of identification to take to the poll. They also learn where to obtain ballot and polling place information and are more likely to vote than those who only use the on-line registration forms.
- Voters engaged at nonprofits are more likely to be from communities historically underrepresented in our democracy, including people of color, low-income earners, and young voters.
- The experience of being in poverty is one of being invisible and silent. Voting allows everyone to have a voice. Most people want to contribute to their community and voting is a way to contribute.
- Decisions by our locally elected officials affect our everyday lives.
- Elected officials are more likely respond to the needs and requests of registered voters.
- Voting binds communities together as people work toward an issue or common good to make their lives better.

While efforts to register voters are continuous, registrations must be submitted before October 11, 2022 to be eligible to vote in the November 8 election.

If you are interested in helping at a voter registration location, there are opportunities available through early October. We also may have some registration cards or materials you can place at your favorite nonprofit. Contact Dorothy Lauterbach or Georgia Kimmel by email. Find out more at:



*Georgia Kimmel*

## Membership

AAUW-WHC is an organization of many hard working members. Mary Andersen, Diana Tiberia, and Pam Doan have done a mammoth job of getting renewed and new members into the 2022-2023 Directory. Many phone calls and emails to remind members to renew membership paid off. Not only does West Harris County Branch want to maintain members, but we also want to grow and we have at the Membership Coffee. Thank you to those members that sponsored new members. We welcome new members anytime.

Please welcome these new members:



Marcia Dye  
Julia Dombrowski  
Peggy Edwards  
Mary Hilton  
Patricia McCarty

Joan McMaster  
Linda Mikeska  
Poleteme Sappenfi  
Peggy Shaw  
Ann Williams

*Carolyn Stoffel –  
VP Membership*

## OCTOBER 2022 ACTIVITIES & INTEREST GROUP NEWS

Sharon Jorgeson, Activities Coordinator

### Hiking Honeys

On **Thursday, October 20**, the Hiking Honeys will visit the Houston Arboretum for a hike on some of their trails. Marilyn Watson will choose one or a combination of trails. The last time we visited the Arboretum was in 2017. Trails have been added since then and existing trails have been improved. We will carpool from Memorial City parking on Barryknoll at **9:30 a.m.** Or you may elect to meet us at the arboretum at **10:00 a.m.** Parking at the Arboretum will be communicated later once Marilyn determines the trails. Eating arrangements will, likewise, be advised later.

Please RSVP to Melba ([armstrong.melba@comcast.net](mailto:armstrong.melba@comcast.net)) if you plan to hike with us.





## Book Groups

### Afternoon Contemporary Literature

**Wednesday, October 5, 1:00 p.m.** The Sentence by Louise Erdrich at La Madeleine 1001 Westheimer Road for lunch and discussion.

Coordinator, Cheryl Smith, 402-651-2445  
[ccherylsmile@gmail.com](mailto:ccherylsmile@gmail.com), Co-Coordinator,  
Linda Morgan, 281-989-6499,  
[amorgan352@sbcglobal.net](mailto:amorgan352@sbcglobal.net)

### Contemporary Readers

**Wednesday, October 5, 1:00 p.m.** Widows of Malabar Hill by Sujata Massey. The group will meet at the home of Cathy Urquhart, 2918 Triway. For more information, contact Coordinator, Sharon Pope (713-376-0940, [spope576@gmail.com](mailto:spope576@gmail.com)) or Co-Coordinator, Cathy Urquhart, 832-454-5017

### Enjoying History Book Club

**Monday, October 10, 1:30 p.m.** Nancy Gusler will lead our discussion of Hell and Other Destinations by Madeleine Albright. We will decide on location of the meeting at our September meeting and an email will be sent to our book club members. Please email Nancy Guilloud, [nanguilloud@aol.com](mailto:nanguilloud@aol.com) with any questions.

### Evening Contemporary Literature

**Monday, October 3, 5:00 p.m.** at Los Tios Restaurant. The Lincoln Highway by Amor Towles will be discussed. Coordinator, Jo Glidewell, 936-327-2085, [WCGLIDE@gmail.com](mailto:WCGLIDE@gmail.com).

### Mystery Book Club

**Tuesday, October 28, 1:30 p.m.**  
Something to Hide by Elizabeth George  
Leader: Helen Maher  
Hostess: To be determined  
Coordinator, Melba Armstrong, 281-392-3190,  
[armstrong.melba@comcast.net](mailto:armstrong.melba@comcast.net)

### Outstanding Literature

The Outstanding Literature Book Group will meet on **Tuesday, October 11, at 9:30am**. We will have an excellent breakfast and a discussion of Let the Great World Spin by Colum McCann. Discussion leader is Peg McNealy. Our meetings happen at La Madeleine, Carillon, The Wine Cave, 10001 Westheimer Road. Welcome to all new members and previous members! You know our motto, "We love our books and we love our laughs!"  
Coordinator Leigh Rappole 281-596-0161  
[leighrap@aol.com](mailto:leighrap@aol.com), Co-Coordinator Barbara Butler, 713-304-0570, [barbarabutler1959@att.net](mailto:barbarabutler1959@att.net)

### Zoom Eclectic Book Group

**Thursday, October 27 at 2:30 p.m.**  
Circe by Madeline Miller  
Discussion Leader: Susan Duntun  
The Zoom Eclectic Book Group meets by Zoom. We welcome all members and guests. You may come for just one book or the entire year.  
For a Zoom invitation, please email Carolyn Morris at [morriscarolyn16@gmail.com](mailto:morriscarolyn16@gmail.com)  
Join us for the lively conversation and friendly faces.



## Gourmet Dining Classic and Nouveau Combined

The Classic Gourmet group will not meet in October. Please join us **Saturday, November 12, 2022**, for a dinner featuring Texas B-B-Q. For further information, please contact the co-chairs: Barb Cook 713-705-7832 or Kris Bybee-Finley 304-610-8708

## WISE - Women Interested in STEM Education

Wow! We travelled through space vicariously during our first activity of the year while reviewing the book *Astrophysics for People in a Hurry* by Neil deGrasse Tyson. Our group is following up this incredible book by heading to the Museum of National Science to extend and explore the topic of our cosmos. You don't have to have read or attended our first meeting. This is a standalone activity.



Join us on **Wednesday, October 12th at 10:30 a.m.** as Tom Hanks guides us on a flight through the universe and deep into galactic space. This new program is called Passport to the Universe and will take us to the edge of our cosmos including a virtual shortcut back to Earth through a black hole. We're ready, are you?

Our group shares current research, outreach and advocacy related to science, technology, engineering, math, and computer science. If you are curious about what's coming down the pike in science, this is the group for you. No science degree required! Please email either Karen North: [knorth@me.com](mailto:knorth@me.com) or Rose Ennis: [roseleeennis@gmail.com](mailto:roseleeennis@gmail.com) if you are planning to attend. We will gather 30 minutes before the program starts at **11:00 a.m.** so you can browse the museum shop or have a cup of coffee at the HMNS's Cafe. After the show, we will walk across to Hotel ZaZa for lunch and discuss the movie. Please plan to carpool or meet us at the museum. Tickets are \$9.00 to the public and \$4.00 if you are a member. Please go online and purchase your ticket NOW!

If you have a prospective member in mind, this is a good activity to introduce them to AAUW-WHC.

*Karen North and Rose Ennis*

## Bridge



We now have only one branch bridge group. If you would like to start a group with some of your AAUW friends please let me know so your group can be included in the newsletter. [jorgesonaauw@gmail.com](mailto:jorgesonaauw@gmail.com).

**Third Thursday, 10:30 a.m.** Contact Coordinator Peg McNaley 281-679-7299 or [peg525@gmail.com](mailto:peg525@gmail.com) to join the group as a substitute.



## Culture Group - FIRST TIME DESTINATION!



Saint Francis Wolf Sanctuary (SFWS) in Navasota will provide a guided tour for the Cultural Group at **1:00 p.m. on Wednesday, October 26**. On the tour you, will learn all about wolves and wolfdogs, observe the animals as they enjoy their daily enrichment, and hear their stories!

Since its inception, SFWS has grown in size and scope, adding several new enclosures and a number of new residents, constructing additional facilities, and branching into a focus on education and outreach. This is the first time our AAUW Branch has been here.



The visitor walkway is covered, so they do not normally cancel tours due to weather; however, close toed shoes and long pants are suggested.

Prior to our tour, we will visit Martha's Bloomers for an early lunch and shopping. The restaurant is an indoor and outdoor Garden Café offering scrumptious flavor, one delightful bite at a time.

Choose from a menu of delicious soups, delectable sandwiches, fresh garden salads, tempting desserts, specialty teas and more. You will be on your own for lunch.

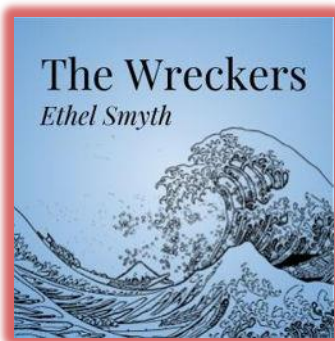


**Susan Boone**  
@Susan-Boone-7

This wild adventure comes with a \$14 entrance fee to the sanctuary. If you want to join us for this pre-HOWL-O-WEEN outing, please send your check, payable to Susan Boone, to 2919 Kevin Lane, Houston, TX 77043 or you can use Venmo using the information above by Monday, October 24.

Meet our Precinct Bus at Memorial City, 12161 Barryknoll Lane. The bus will leave promptly at **9:30 a.m.** Have \$1 for the bus driver's lunch when you board. If you have any questions, please contact Susan Boone at [smboone@gmail.com](mailto:smboone@gmail.com) or -713-854-7537. You must sign up for the tour prior to the day, so act NOW.

## SAVE THE DATE #1! AAUW is going back to the Opera in early November!



Do you love mystery, romance, and opera? If you do, Dame Ethel Smyth's epic 1906 opera *The Wreckers* is the opera for you! We will be riding the Harris County bus, eating at Lorenzo's Restaurant, and arriving in time for the **November 9, 2022, 7:30 p.m.** performance. These are discounted tickets again for only \$15, and a fun evening of food and culture. To reserve a ticket just for you, send a check made out to Carolyn Morris to 11159 Riverview Way, Houston, TX 77042.

More information about the opera can be found at <https://www.houstongrandopera.org/events-tickets/2022-23-season/the-wreckers/>.

## SAVE THE DATE #2 The Culture Group returns to San Felipe de Austin for new exhibits

Mark your calendars for **Friday, November 11** when we will take a time travel trip to the Town of San Felipe de Austin, the colonial capital of Austin's Colony, in Mexican Texas. There is a wonderful museum and gift shop. New this year is the culmination of hard work by the resident archeologist in recreating the town's key structures for us to explore.



This very popular tour was first offered in 2018 as part of the opening of this museum at the site of Stephen Austin's colony on the banks of the Brazos River. Contact Elizabeth Martin at [elizamart349@gmail.com](mailto:elizamart349@gmail.com) to reserve a spot on the bus. Details will be provided in the November newsletter.



## Great Decisions

Great Decisions has three groups that meet February through May. The Spring 2023 Topics may include:

- Energy Geopolitics.
- War Crimes.
- China's Foreign Policy.
- Economic Warfare.
- Elections in Latin America.
- Global Famine.
- Iran and the Gulf States.
- Climate Migration.



Check future newsletters for further information. The Thursday Afternoon Great Decisions Group meets the first and third Thursdays, 2:00 p.m. to 4:00 p.m. For further information, please contact Coordinator, Martha Ewell, tel. 713-782-2084. The Tuesday Afternoon Group meets the first and third Tuesdays, 2:00 p.m. to 4:00 p.m. For further information please contact Coordinator, Pat Thomsen at 713-466-7995 or [pthom2@bcglobal.net](mailto:pthom2@bcglobal.net). The Wednesday Evening Group meets the second and fourth Wednesdays, 7: p.m. to 9:00 p.m. For further information please contact Coordinator, Willette Norman at 281-497-3626 or [willetten@gmail.com](mailto:willetten@gmail.com)

## Garden Divas

On **Tuesday, October 4**, join the Garden Divas for a trip to BeeWeaver Honey Farm, County Rd 319, Navasota, TX 77868. We will learn about beekeeping, watch a beekeeper open a hive while we are safely screened in, and have a honey and a mead tasting as well. The Weaver family has been beekeeping, selling honey and beekeeping equipment since 1888 and they love to share their secrets.



They have a very nice gift shop full of interesting bee related items. They sell beekeeping supplies as well, if you find yourself looking for a new hobby! Did you know if you have hives, you are supposed to tell the bees when there's an important family event such as a birth, death, or a wedding?

Price for the tour will be \$8. Lunch will be at the Classic Rock Coffee Co. & Kitchen, 129 E. Washington Ave., in nearby Navasota. Carpooling from the usual spot behind the

Memorial City Mall just south of Barryknoll, we will leave at **9:00 a.m.** promptly. The drive will take about an hour.

Call or email Diane Roberts (832-752-9690, [diane77401@gmail.com](mailto:diane77401@gmail.com) or Susan Boone (713-854-7537), [samboone@gmail.com](mailto:samboone@gmail.com).

*Susan Boone*  
[samboone@gmail.com](mailto:samboone@gmail.com)

## Byway Birders

On **Saturday, October 22** the birding group will look for shore birds and whatever we find on the **Bolivar Peninsula**. Meet on the Bolivar side of the ferry at **9:00 a.m.** Bring the usual binoculars, hat, sunscreen, bug spray and money for lunch. All members, spouses and friends are invited to join the group. Call Mary Dodson, 713-516-4266 to let her know you are going or if you have any questions.



## SAVE THE DATES



On **November 3-7** the Byway Birders will be visiting the Rio Grande Valley. We will be using the Hampton Inn in Mission as our base. If you are interested in joining us, make your reservations at the Hampton Inn (888-432-0362) and let Sharon Jorgeson know that you plan on going. We include spouses and friends on our trips. These are some of the areas that we may visit as time allows: Edinburg Scenic Wetlands and World Birding Center,

Quintana Mazatlán World Birding Center, Bentsen Rio Grande State Park, Estero Llano Grande State Park, Laguna Atascosa National Wildlife Refuge, Santa Ana National Wildlife Refuge. Please contact Sharon at 281-703-5939 or [sjorgeson@gmail.com](mailto:sjorgeson@gmail.com) for additional details about the trip and to get on the contact list.

Please contact Pat Dach, if you would like to be put on the contact list for future birding outings at 281-701-5846 or [patdach@gmail.com](mailto:patdach@gmail.com).



Arlene Baker	Oct 01	Diana Tiberia	Oct 16
Valerie Koehler	Oct 01	Victor Edwards	Oct 17
Joan Belk	Oct 04	Sharon Rodgers	Oct 18
Nancy Bowden	Oct 05	Kathryn Sandlin	Oct 20
Josephine Glidewell	Oct 05	Jane Cooper	Oct 25
Denise Bossarte	Oct 06	Deborah Rossi	Oct 26
Barbara Cook	Oct 07	Diane Roberts	Oct 27
Kristena Watson	Oct 07	Mary Dodson	Oct 28
Karen North	Oct 08	Martina Simpson	Oct 30
Jacqueline Shelton	Oct 10	Betsy Calabro	Oct 31
Peggy Edwards	Oct 13		

## Directory Update

Please add the following to your  
2022-2023 directory:  
Marie E Rem  
11711 Memorial Dr., #7  
Houston TX 77024  
Cell: 518-928-2333  
marie.rem@gmail.com

